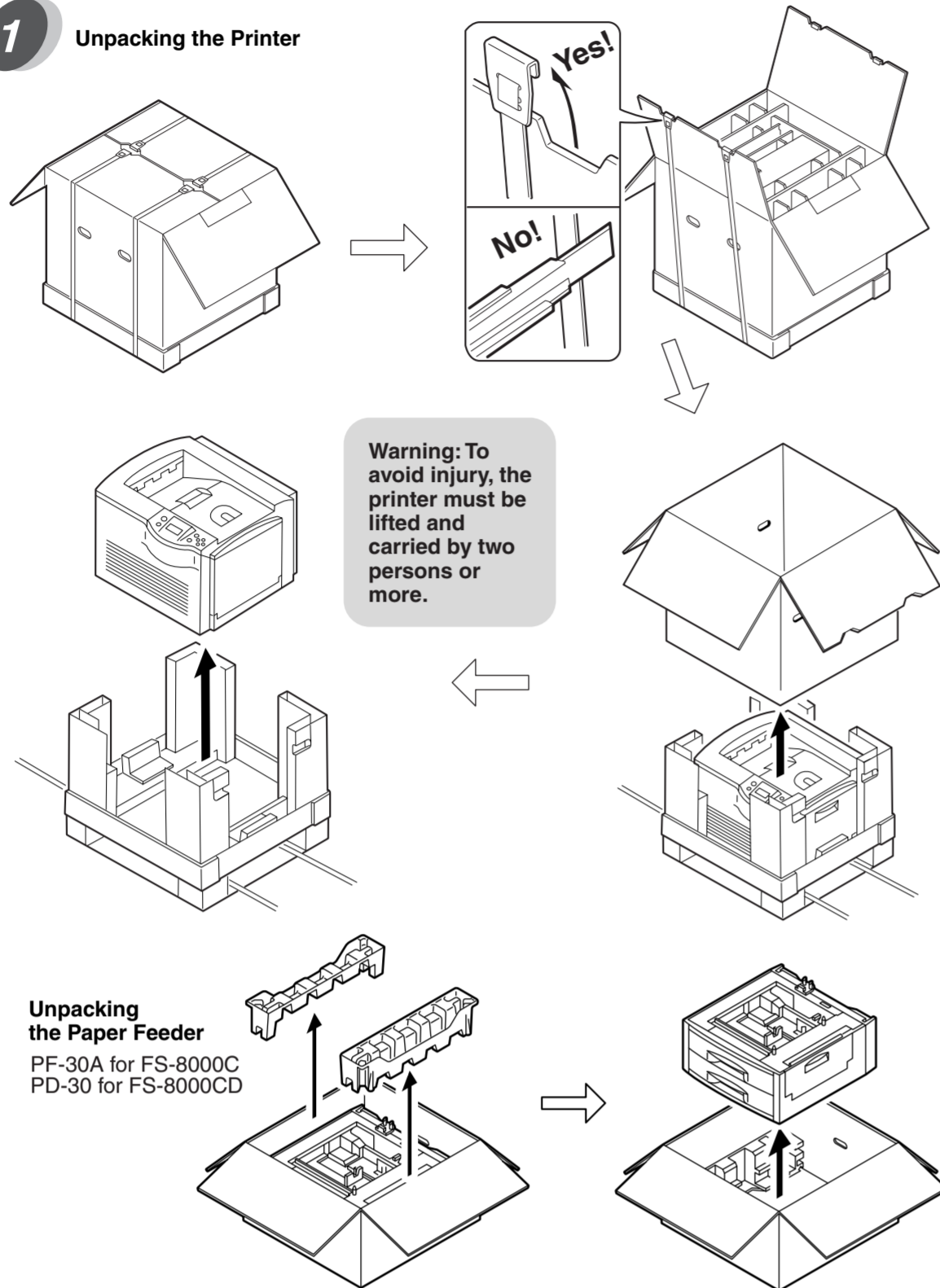


Important!

Installation should be performed only by a qualified service personnel. Kyocera Mita assumes no liability for any damage caused by an improper installation of the printer.

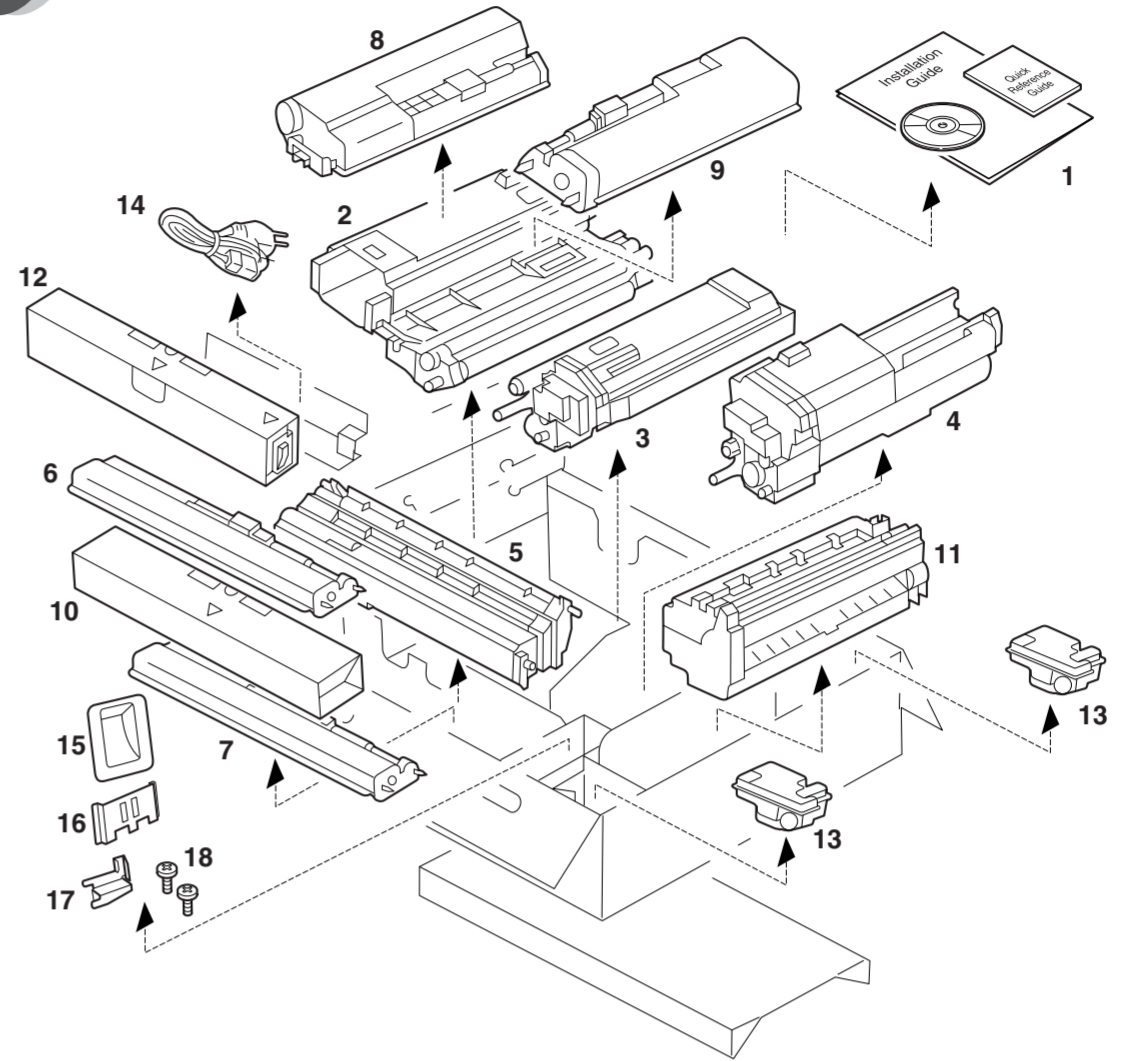
Unpacking

1 Unpacking the Printer



Checking Parts and Components

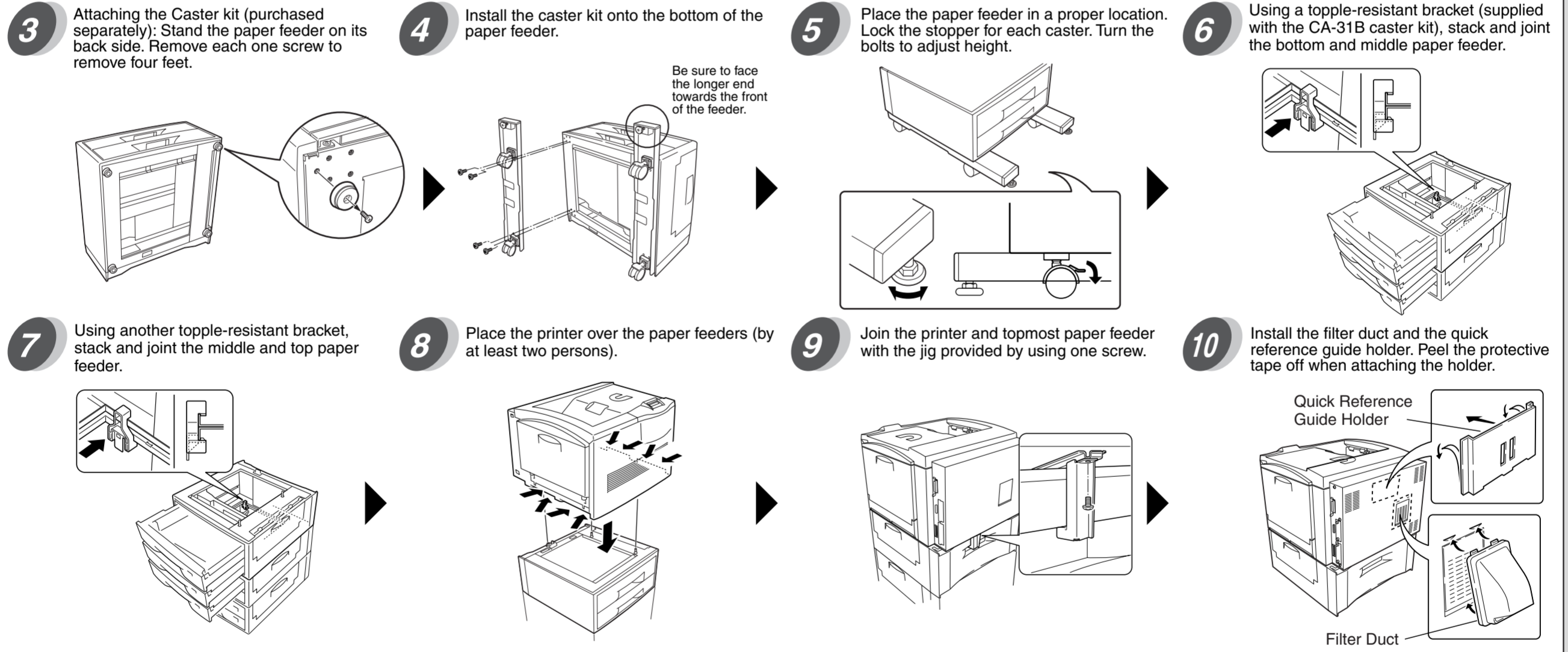
2



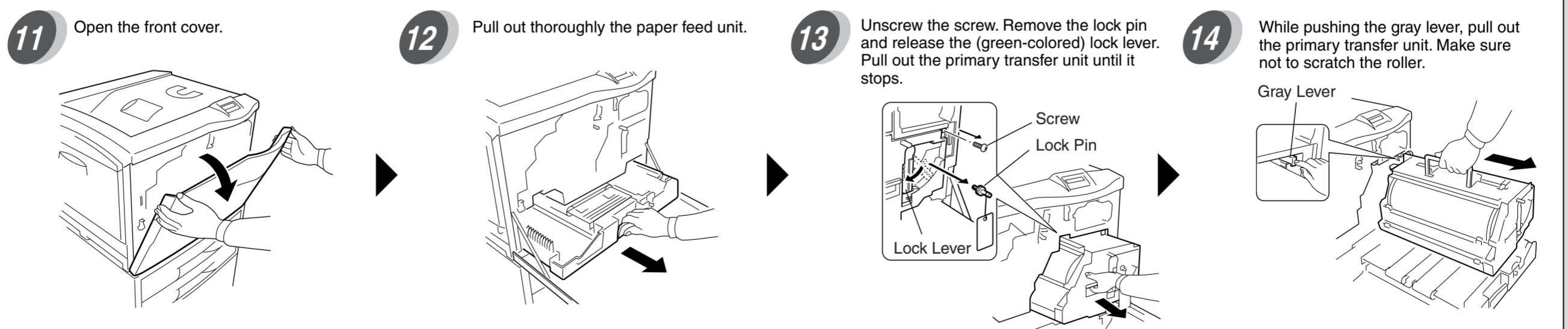
- | | |
|---|------------------------------------|
| 1 Documents
Installation Guide (This sheet)
Quick Reference Guide
CD-ROM | 9 Black Toner Container |
| 2 Cyan Developer | 10 Secondary Transfer Unit |
| 3 Magenta Developer | 11 Fuser Unit |
| 4 Yellow Developer | 12 Oil Unit |
| 5 Black Developer | 13 Waste Toner Bottles |
| 6 Cyan Toner Container | 14 Power Cord |
| 7 Magenta Toner Container | 15 Filter Duct |
| 8 Yellow Toner Container | 16 Quick Reference Guide Holder |
| | 17 Jig (Used in step 9) |
| | 18 Screws (Used in steps 9 and 16) |

The following setup assumes three paper feeders to be installed with the printer (including the one supplied as a standard accessory), which requires a CA-31B caster kit to be installed on the bottom of the bottom paper feeder. If the extra paper feeders are not installed, the CA-31 casters may be used. See the Operation Guide for more details.

Placing the Printer



Installing the Fuser Unit, Oil Unit, Secondary Transfer Unit, and Waste Toner Bottle



Continued on
the Reverse Page

Installing the Fuser Unit, Oil Unit, Secondary Transfer Unit, and Waste Toner Bottle

15 Open the paper guide. Insert the fuser unit onto the paper feed unit.

16 Fix the fuser unit with one screw.

17 Open the fuser top cover by the lock buttons.

18 Firmly tighten two screws. Close the fuser top cover, then close the paper guide.

19 Remove the oil sealing tapes from the oil unit. Unlatch three latches and then take out the oil unit from the cover.

20 Install the oil unit onto the fuser unit until it is locked.

21 Connect the tab from the paper feed unit to the terminal of secondary transfer unit. Then, install the secondary transfer unit.

22 Install the waste toner bottle.

Inserting the Developer Units

23 Close the paper feed unit.

24 Unscrew the four screws. Free the two stoppers.

25 Pull out the process frame.

26 Peel off the tapes from the developer units and remove the protective pad from each unit.

27 Set the black developer facing the developing roller towards you.

28 Set the cyan developer.

29 Set the magenta developer.

30 Set the yellow developer.

31 Close the process frame and then close the stoppers. Fix the two (A) screws first, and then fix the two (B) screws.

32 Pull out the paper feed unit.

33 Reinstall the primary transfer unit. Insert it thoroughly on the rails.

34 Close the lock lever. Fix the screw. Reinsert the paper feed unit.

Installing the Toner Containers

35 Shake each toner container well before use. Install the four toner containers into their corresponding developer units.

36 Close the front cover.

Making Connections

37 Connect to the computer.

38 Connect the power cord to the power outlet. Turn on the printer power switch.